



AT-RISK ADOLESCENTS, AUTONOMY, RELATENESS, &  
STIGMA

Rebecca S. Jones, Namhee A. Kim, Caihong R. Li,  
Kiao-Yin Chen, Robert M. Neeley, Dr. Ellen L. Usher, &  
Dr. Fred Danner

# Introduction





Success

Failure

# Youth At Risk



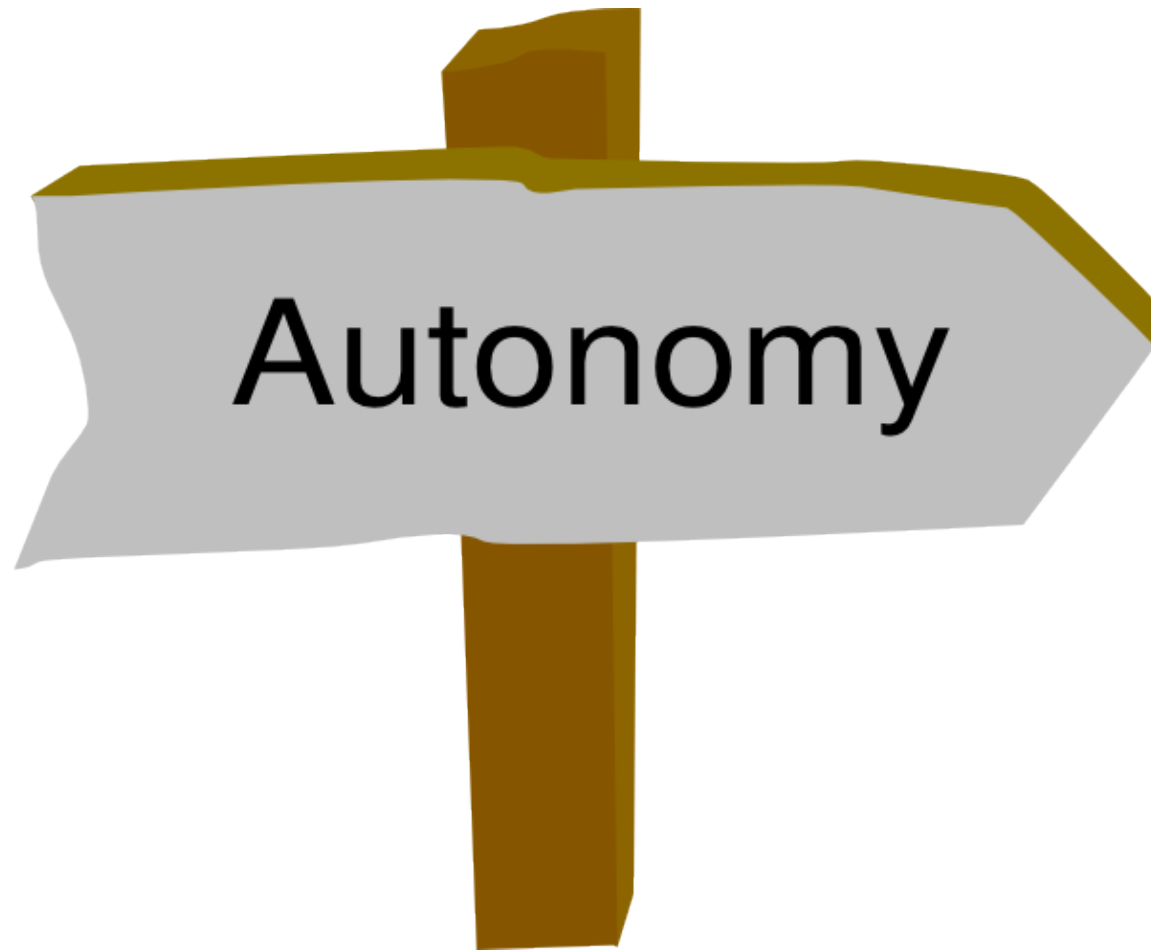
# Theoretical Framework



# Self-Determination Theory

Motivational Factors

# Literature Review



# Literature Review



# Literature Review

STIGMA





# Purpose of the Study

**RQ 1**

What are the descriptive statistics for the variables in the study?

**RQ 2**

Do autonomy support, sense of belongingness, and stigma consciousness differ by gender?

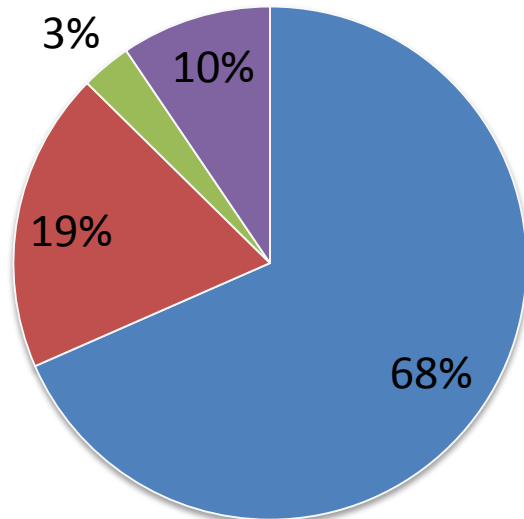
**RQ 3**

What are the relationships among autonomy, sense of school belonging, and stigma consciousness?

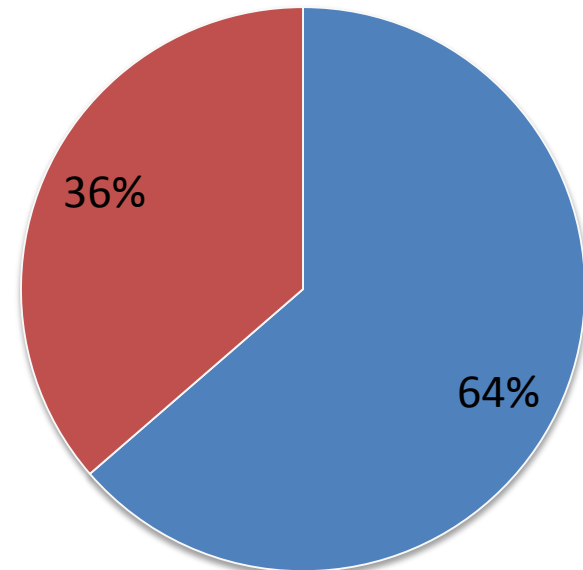
# Participants

$N = 126$

## Ethnicities



## Gender



# Measures

## Perceived Autonomy Support Scale (

- 15 items,  $\alpha = .xx$
- Sample: "My teacher encourages me to ask questions."

## Psychological Sense of School Membership Scale (Goodenow, 1993)

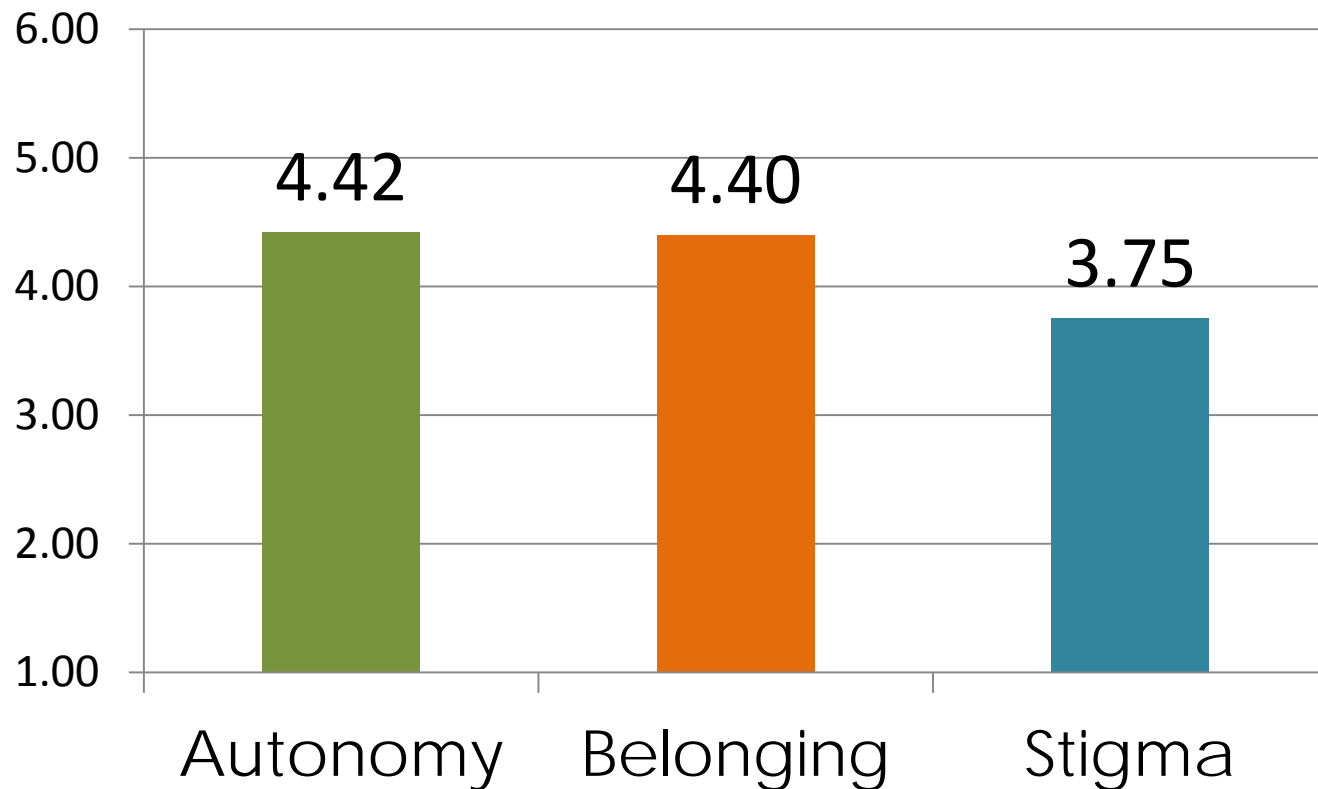
- 18 items,  $\alpha = .xx$
- Sample: "I feel like a part of my school."

## Stigma Consciousness Scale (Modified from Pinel, 1999)

- 10 items,  $\alpha = .xx$
- Sample: "Most people have negative views about students who go to my school."

# RQ1: What are the descriptive statistics for the variables in the study?

## Means



Standard Deviations:

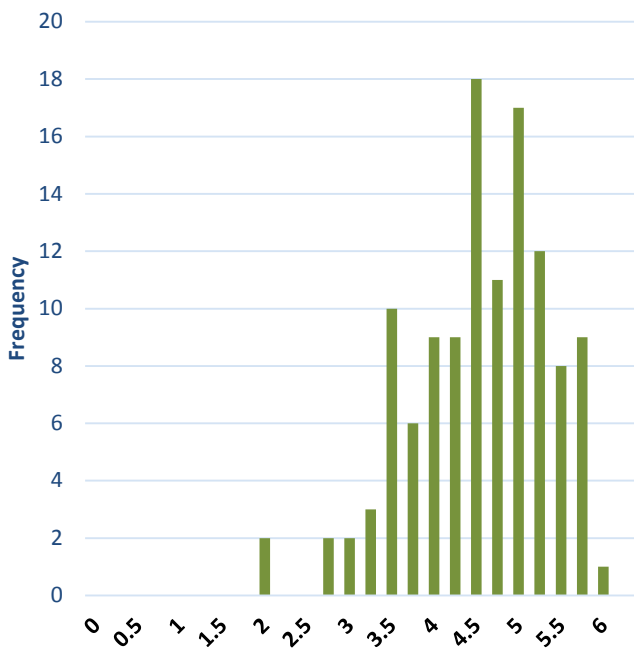
$\pm 0.823$

$\pm 1.12$

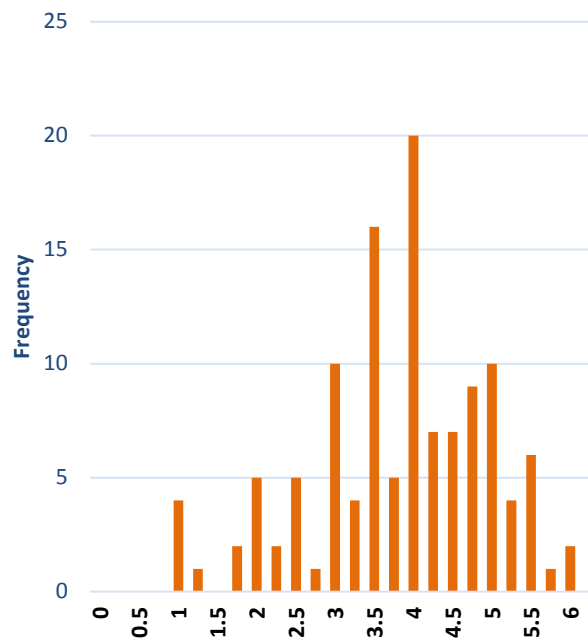
$\pm 0.668$

# RQ1: What are the descriptive statistics for the variables in the study?

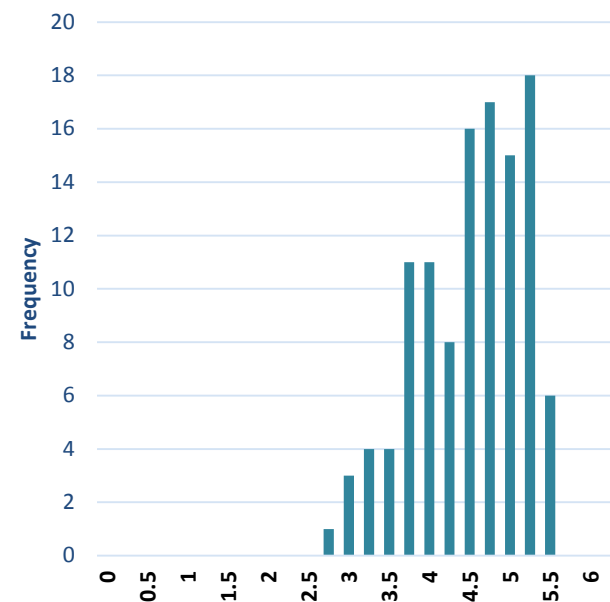
## Perceived Autonomy



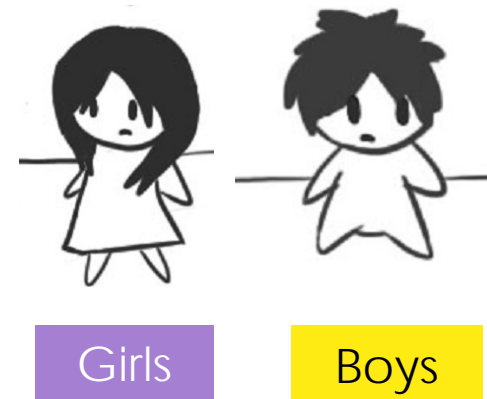
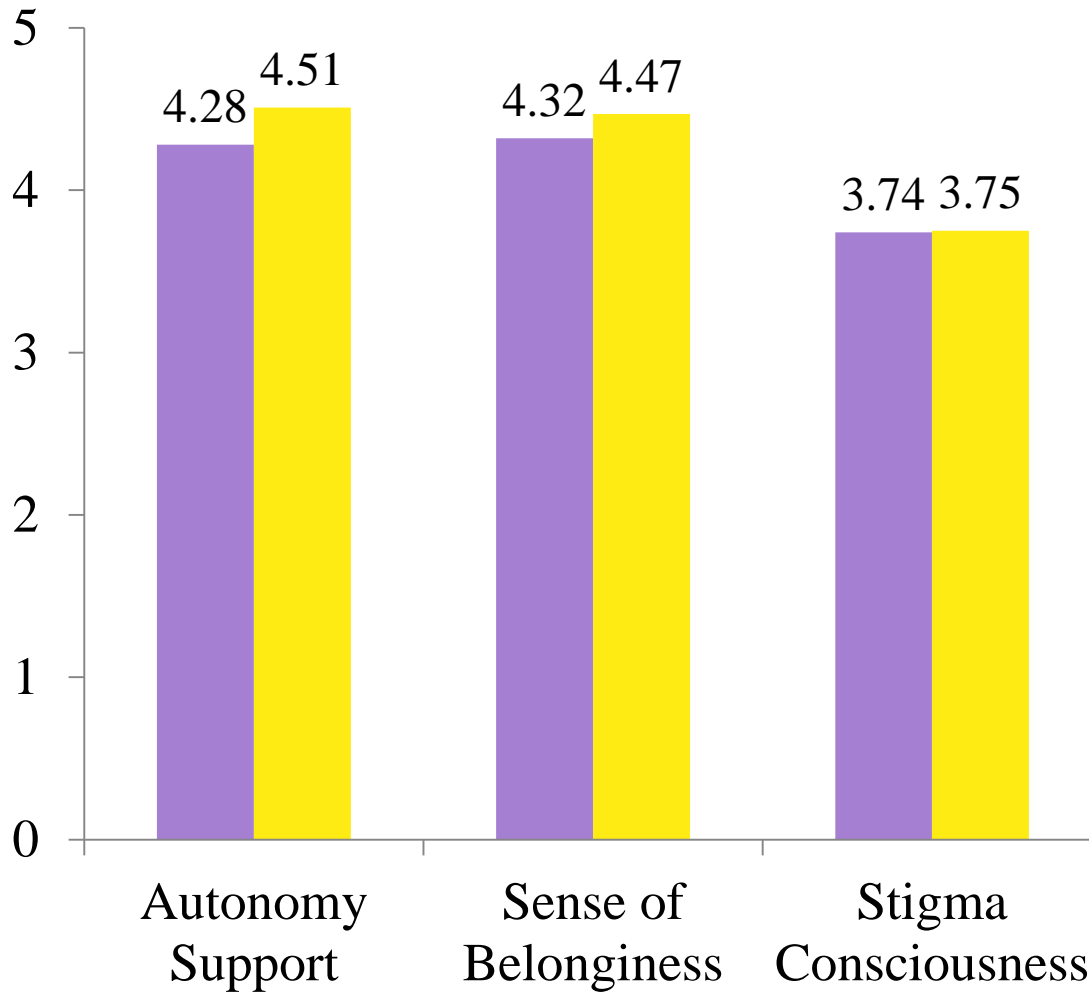
## Stigma



## Psychological Sense of School Membership



# RQ2: Do autonomy support, sense of belongingness, and stigma consciousness differ by gender?



RQ3: What is the relationship among the variables in the study?

# RQ3: What is the relationship among the variables in the study?

Correlation Matrix	Autonomy	Relatedness /Belonging
Autonomy		
Relatedness /Belonging	+	
Stigma	?	?



# RQ3: The Relationships—What We Found:

Correlation Matrix	Autonomy	Relatedness /Belonging
Autonomy		
Relatedness /Belonging	<b>.702**</b>	
Stigma	.139	-.038

# Key Findings & Conclusions

Results

# Discussions & Implications



# Questions & Comments



# Thank you!

Contact us at:

[p20motivationlab@gmail.com](mailto:p20motivationlab@gmail.com)



For a copy of this presentation, please capture our QR code: